

Project By:



SITE ADDRESS :
SHIVANSH SCARLET
Near Vastukala Site, B/h Riyasat Party Plot, Kathwada.

+91 8799617575

NOTES

- Stamp Duty, Registration Charges, Legal Documentation Charges, Advance Maintenance, Fix Maintenance Charges, AUDA Charges and Electric Co. Charges including cable and sub-station cost shall be borne by the purchaser.
- GST or any additional charges, taxes, cess or duties levied by the government/ local authorities prior, during or after the completion of the scheme will be borne by the purchaser.
- Changes / Alteration of any nature, including the elevations, exterior colour scheme of the apartments or any other change affecting the overall design concept and outlook of the scheme are strictly not permitted during or after the completion of the the scheme.
- All elements, objects, materials, equipments and colour schemes are shown are artist's impressions. Actual may be different as per architect's designs.
- All dimensions shown here are unfinished to un finished wall.
- The brochure is intended only to convey the essential design and technical features of the scheme.



3 BHK LUXURIOUS FLAT

With Allotted Parking 



NEXT LEVEL OF LIFE
**ENJOY
EQUALITY**

3 BHK Ultra Luxuries Apartments & Shops.
Ultra Super Amenities and more...



CONNECTED TO LIFE & EVERYTHING THAT MATTERS

EXPERIENCE SHIVANSH SCARLET A WELL-CURATED LIFE,
AT 100FT NIKOL-KATHWADA ROAD WHICH ENCAPSULATES
BEST OF LIVE WITH EVERYTHING IN CLOSE VICINITY.
IT WILL SET A BENCHMARK OF CONVENIENCE & PROXIMITY.



TURNING YOUR
DREAMS INTO
EXCELLENT
COMFORT SPACE



ENTRANCE FOYER

THE COLORFUL
LIFE IN
HERE NIKOL



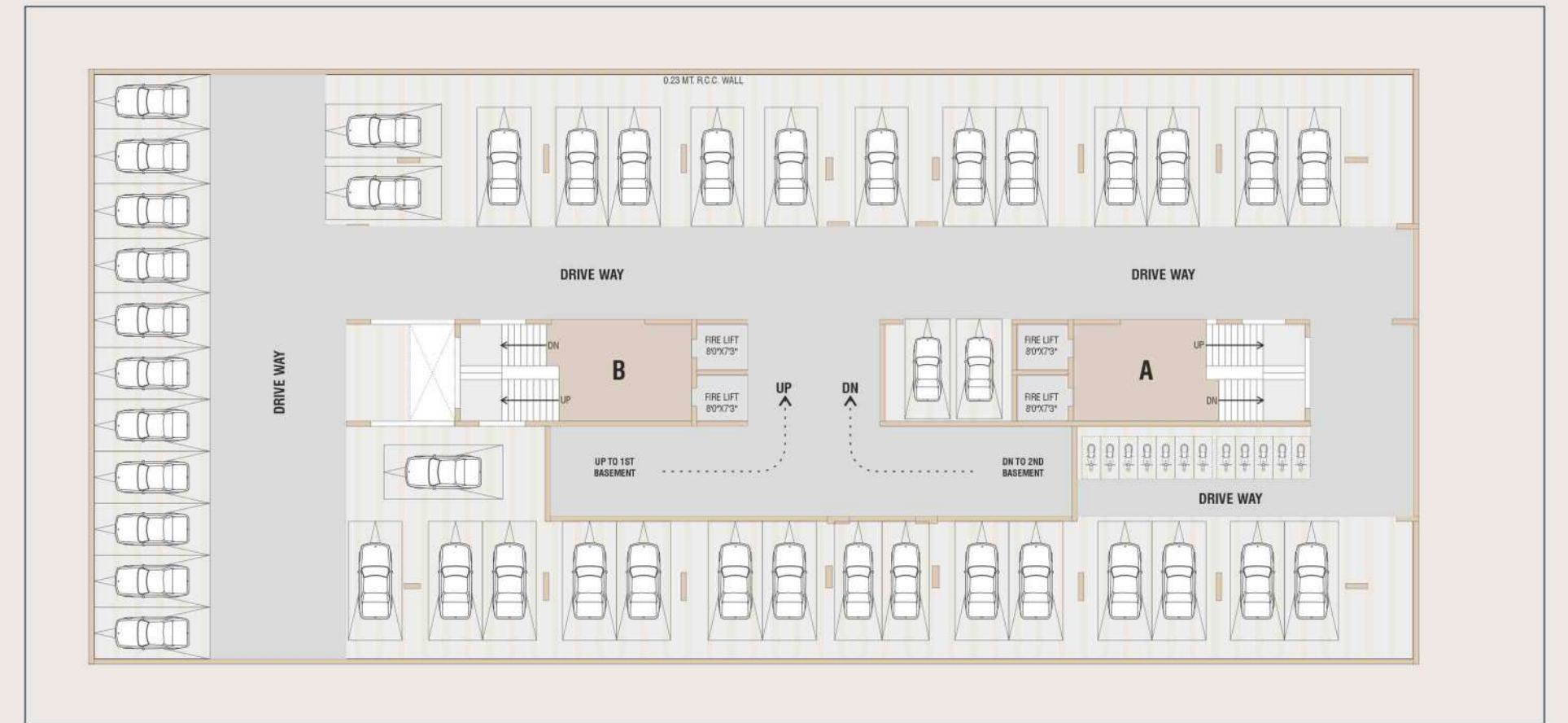
MORE NATURE



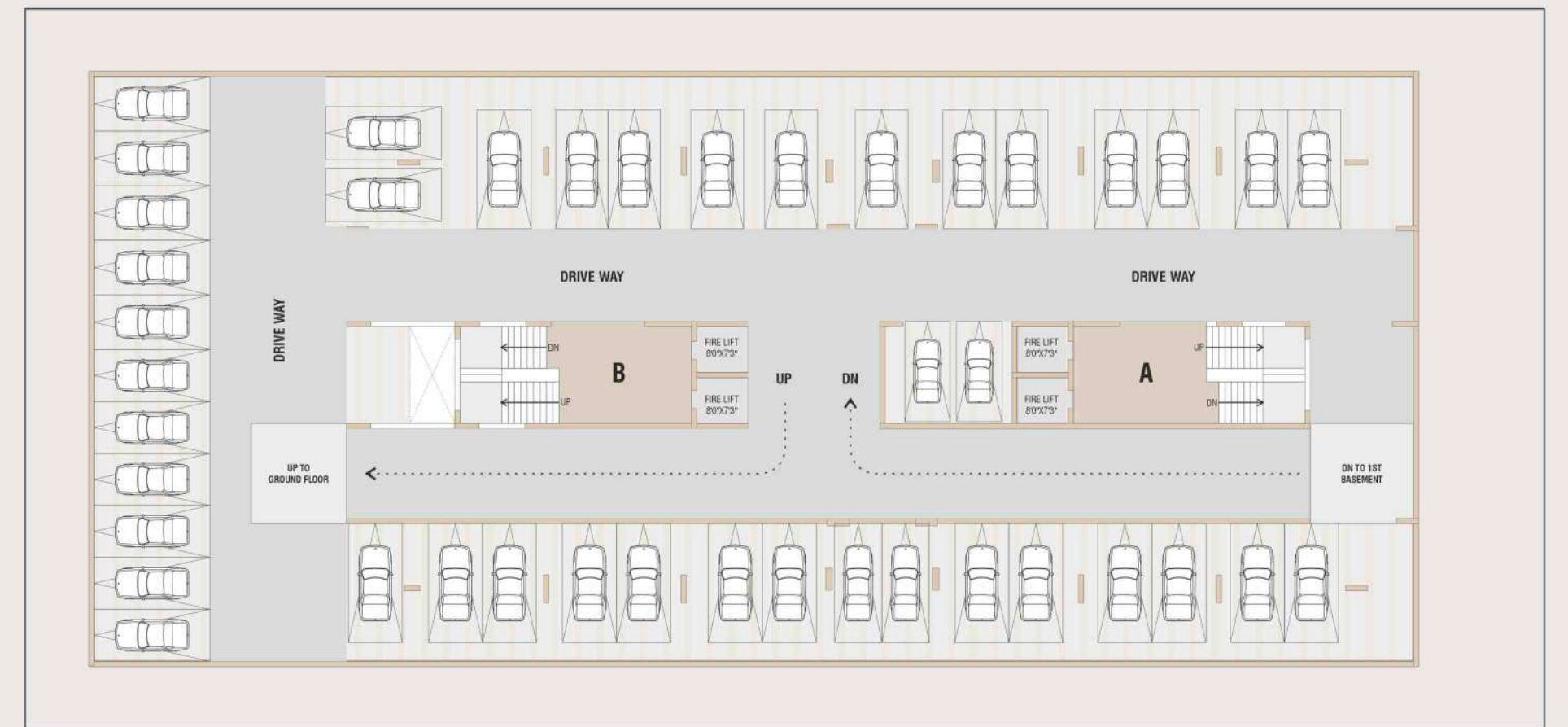
TO INDULGE IN AMENITIES

A MASSIVE GARDEN EMBRACED WITH EXOTIC PLANTATION
OPEN FLATS ENHANCED BY NATURAL LIGHT & FRESH AIR!





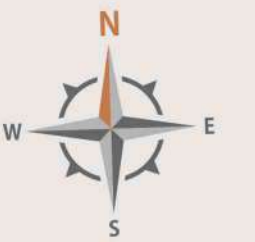
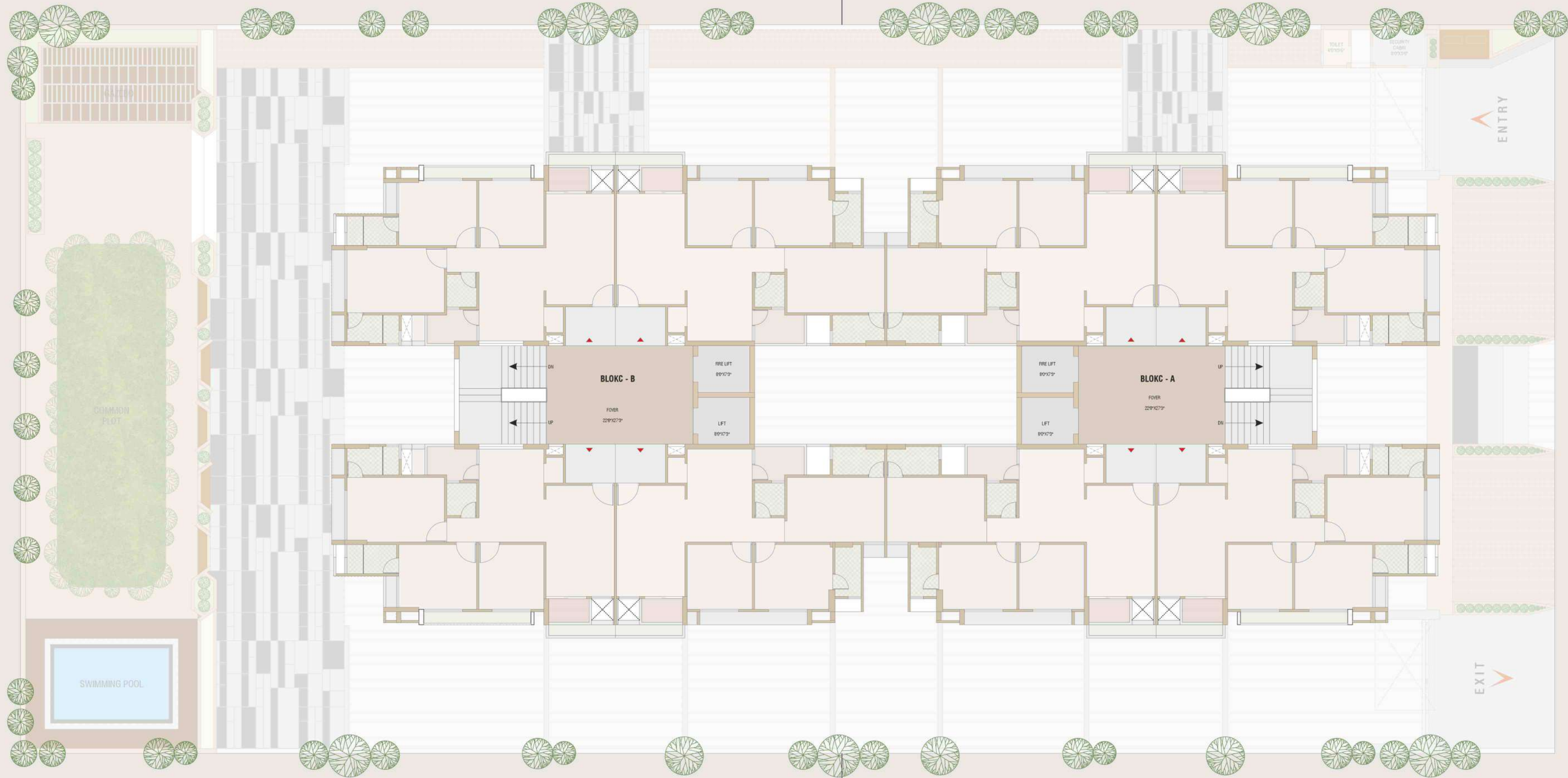
2ND BASEMENT LAYOUT PLAN



1ST BASEMENT LAYOUT PLAN

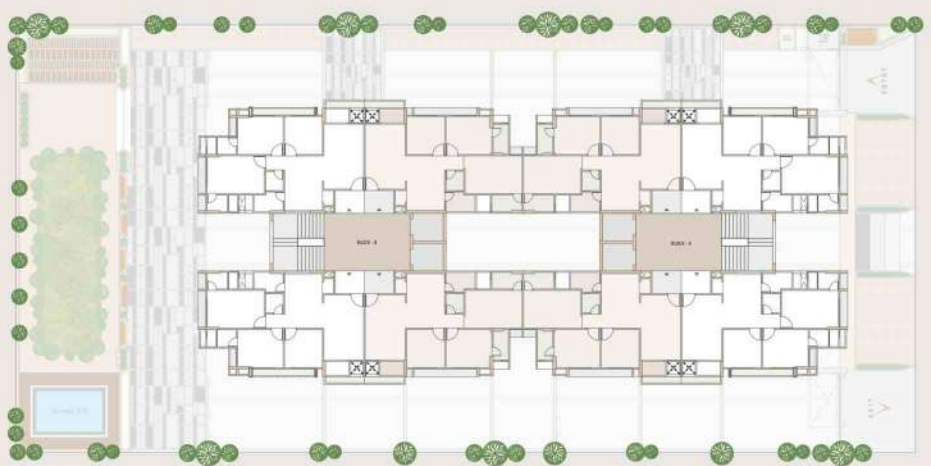
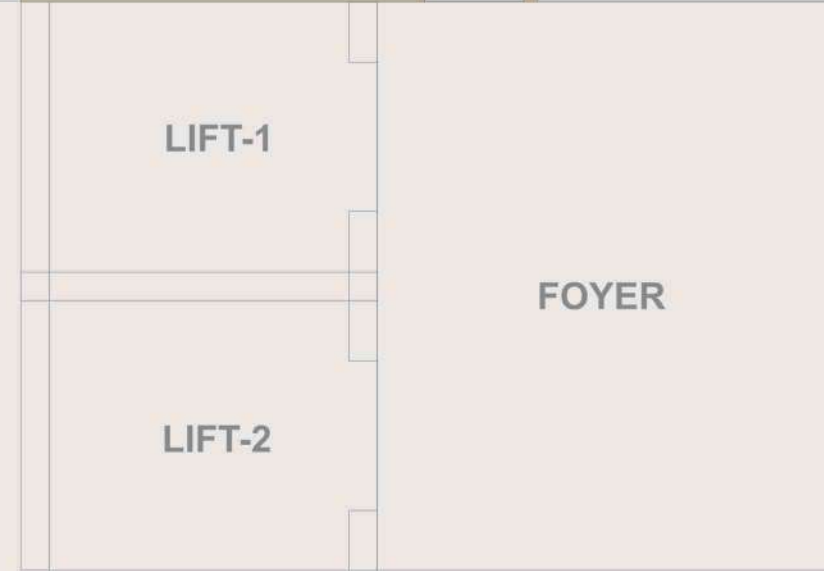


GROUND FLOOR
LAYOUT PLAN

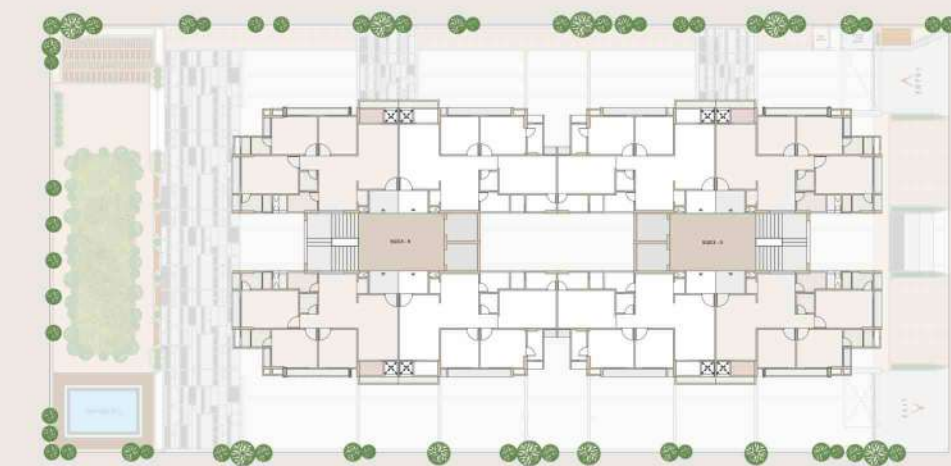
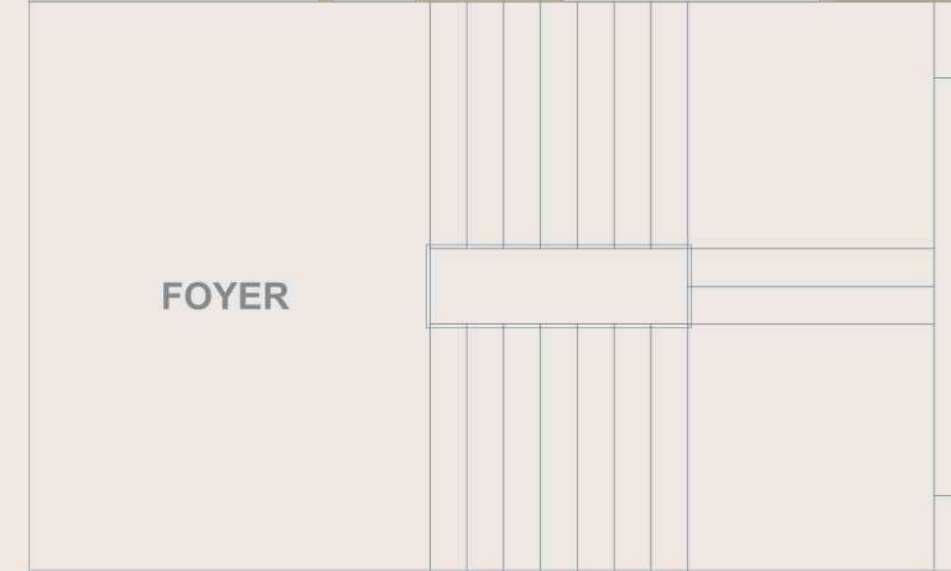


TYPICAL FLOOR
LAYOUT PLAN

TPYE- 2



TPYE- 1



UNIT PLAN

3D SECTION VIEW



*a spot that will
refresh you*



Elegant
Apartment



Exclusive
Amenities



Premium
Lifestyle



Children's
Play Area



Landscaped
Garden



Senior
Games



Gazebo



Planter



Swimming
Pool



Children's
Play Area



Exclusive
Garden



Indoor
Games



shivansh SCARLET

Kathwada , Nikol, Ahmedabad.

ARCHITECT
गिर architect
Akash Patel

Structure Eng.
P-CUBE
CONSULTANTS



SCAN FOR LOCATION



SCAN FOR
FURNISHED SAMPLE HOUSE

SPECIFICATION



STRUCTURE

- Earthquake resistant R.C.C. frame structure work & brick wall



FLOORING & WALL TILES

- Branded double charged Vitrified tiles flooring in all rooms
- Tiles up to lintel level in all bathroom and kitchen



PLUMBING / SANITARY

- Concealed central point plumbing with branded CP fitting
- Branded sanitaryware in all bathrooms



KITCHEN

- Sandwich granite platform in kitchen with S.S. sink and standard accessories



PLASTER

- Double coat sand face plaster on external walls
- Single coat mala finish plaster on inside walls



LIFT

- Two standard qualities lifts in each block



ELECTRIC

- Single phase concealed ISI copper wiring with modular switches
- MCB distribution panel to ensure safety with RCCB
- Adequate AC, TV, Geyser, Fridge, Lighting, Fans, Water purify points with ISI approved good quality electrical accessories
- Ample electrical points in all area as per company conditions



DOORS & WINDOWS

- Decorative main door with three step safety lock
- Other doors wooden frame and flush doors
- Fully glazed anodized aluminum section windows with marble frame with ISI standard safety bars



PAINTS

- Long lasting and weather resistant paint on all external walls
- All internal walls with three coat of white putty for long life and good luster of your paints
- White exterior cement primer on internal walls



WATERPROOFING

- Waterproofing in all toilet area to prevent seepage with epoxy
- White tiles on terrace for heat and water resistance



WATER SUPPLY

- 24x7 Water supply with atomized borewell in all the blocks