

A Project By:



**RAMOLIYA**  
REALTY

Contact No. : +91 97121 33353

**Gulmohar**  
• The Garden Living •

3 & 4 BHK LUXURIOUS LIVING



The Garden Living





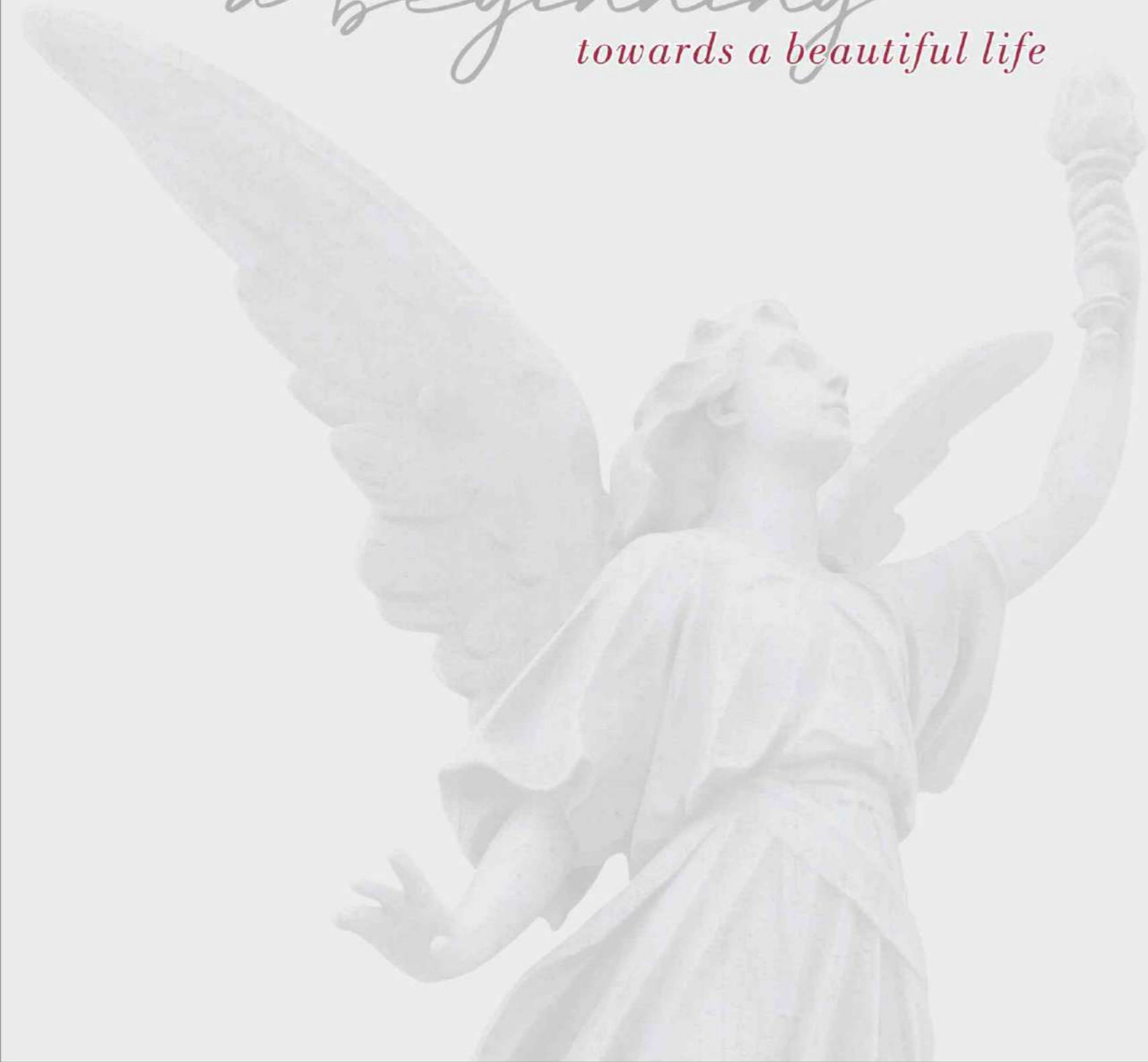


**Gulmohar**  
The Garden Living



A SCULPTURAL  
STATEMENT  
SO POWERFUL,  
IT WILL  
TRANSFORM  
**NIKOL'S**  
SKYLINE FOREVER...

*a beginning*  
*towards a beautiful life*



CRAFTING  
**LUXURY** WITH COMFORT

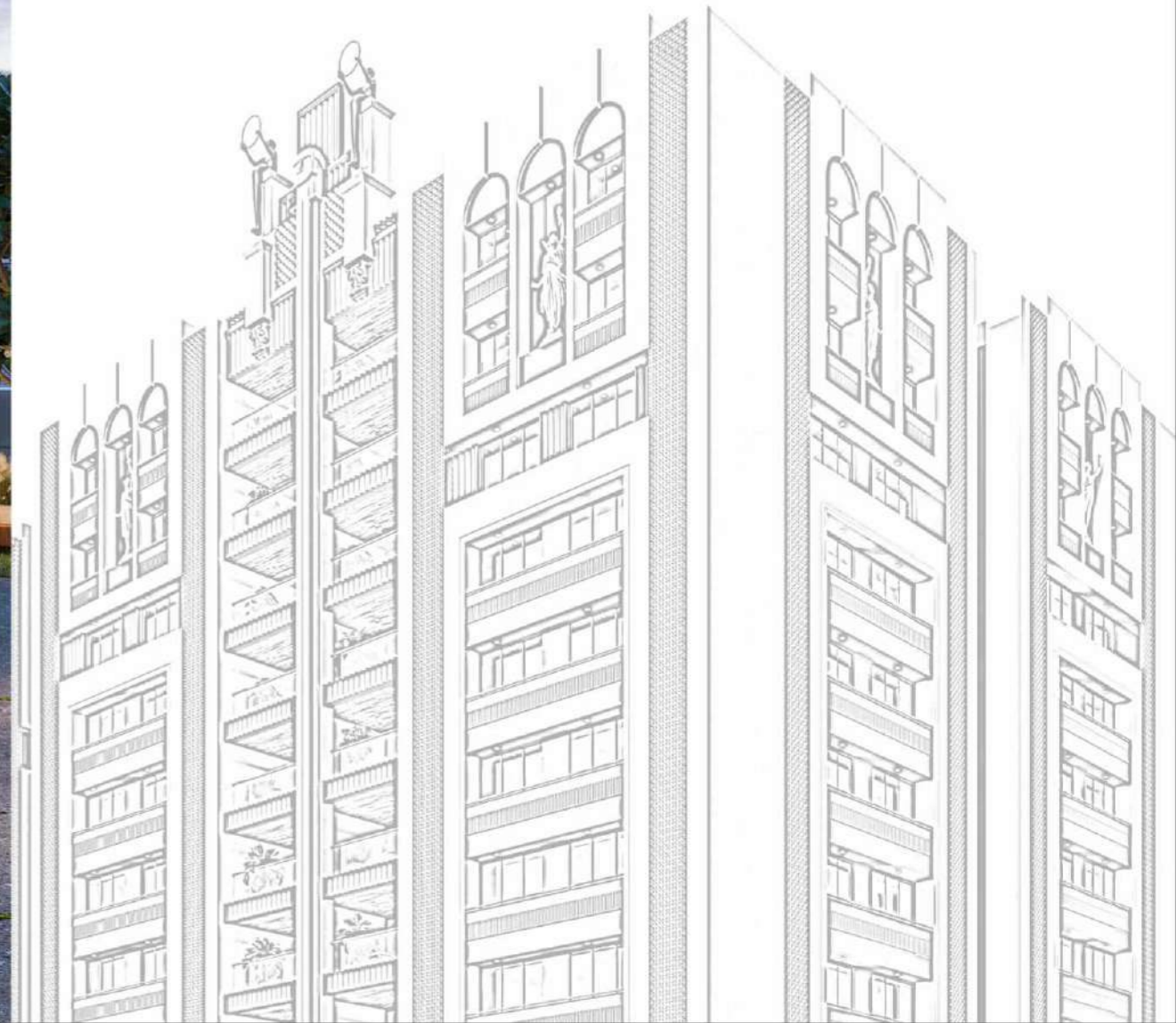








MODERN  
ARCHITECTURE WITH  
INNOVATION





- 101
- 104
- 107
- 110
- 102
- 105
- 108
- 111
- 103
- 106
- 109
- 112

ENTRANCE FOYER



SWIMMING POOL





MULTI PURPOSE HALL





TODDLER GAMES



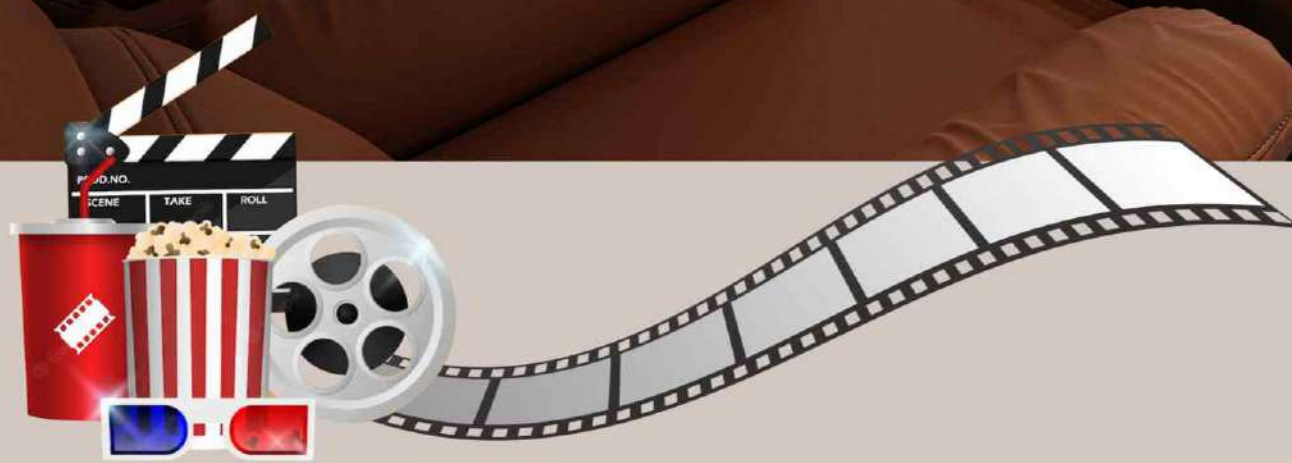
INDOOR GAMES





## GYMNASIUM

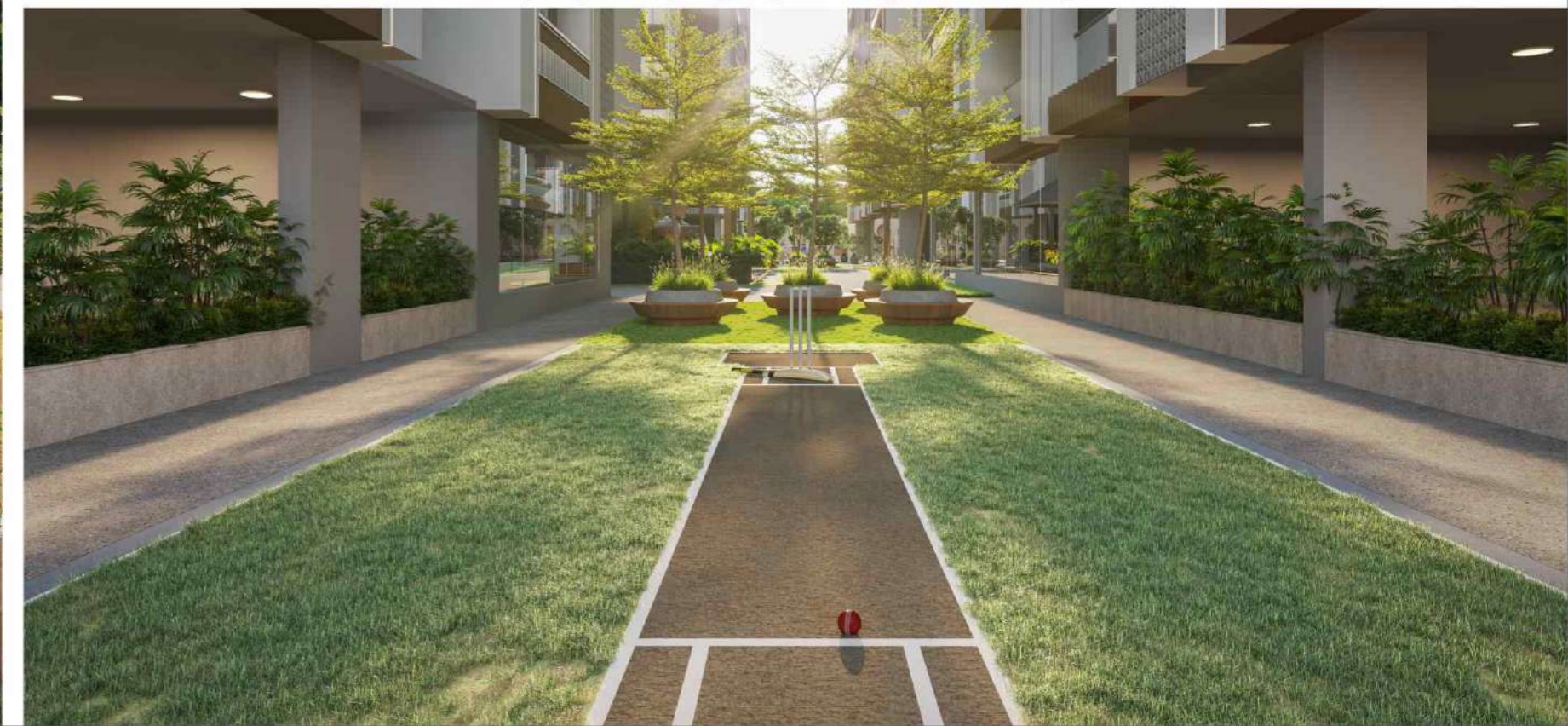




THEATER



OUTDOOR GAMES





॥ वक्रतुंड महाकाय सूर्यकोटि समप्रभ  
निर्विघ्नं कुरुमेदेव सर्वकार्येषुसर्वदा ॥











**RAMOLIYA**  
REALTY



# GROUND FLOOR LAYOUT PLAN

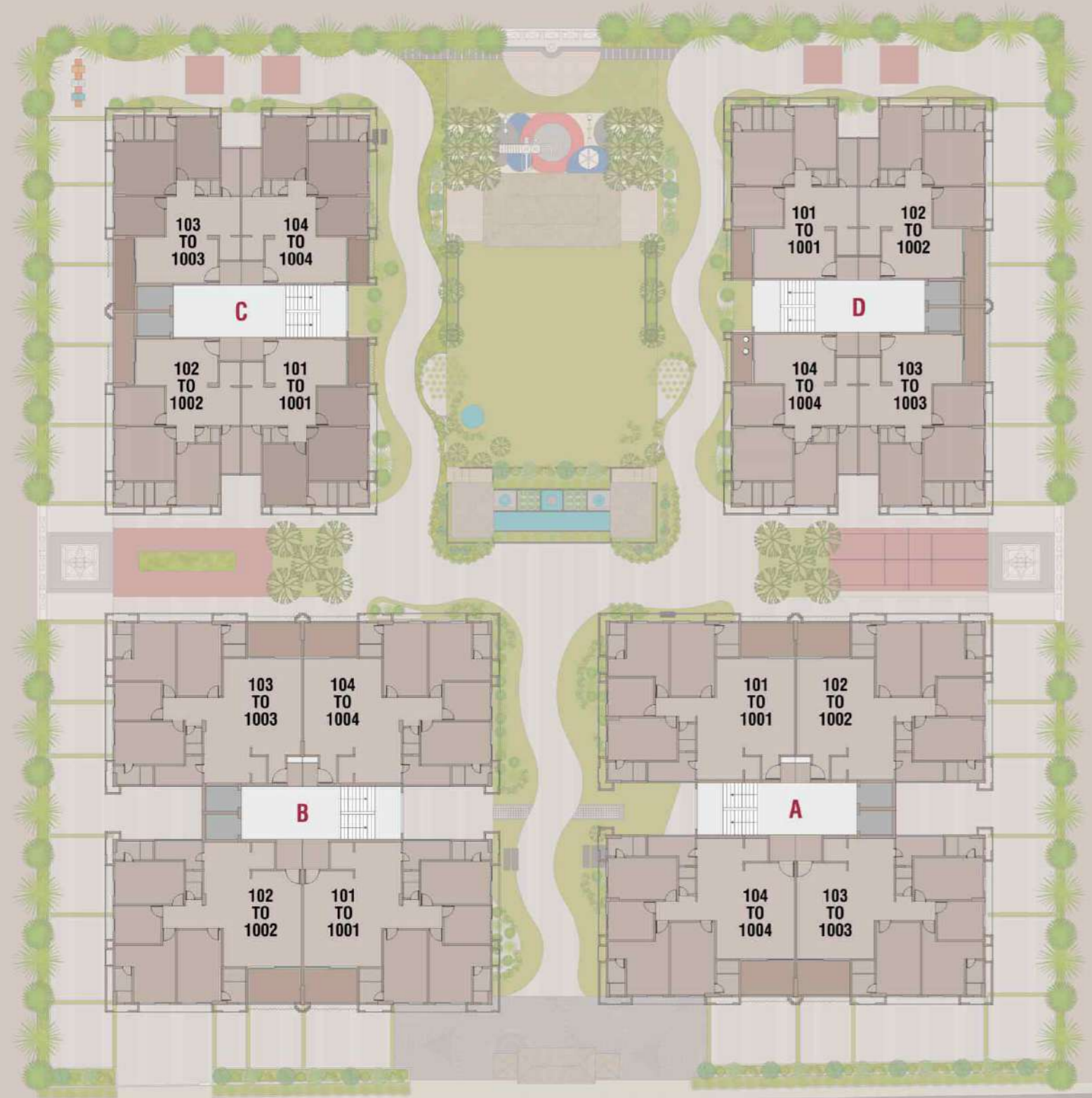
## LUXURY AMENITIES

SWIMMING POOL	POOL DECK	THEATER	BOX CRICKET	GYMNASIUM
TEMPLE	PLAY COURT	BANQUET HALL	POOL TABLE	TODDLER ZONE
CHESS BOARD	PARTY LAWN	WATER BODY	SCULPTURE GARDEN	JHULA COURT

## COMMON AMENITIES

LANDSCAPED GARDEN	CHILDREN PLAY AREA	ZEN GARDEN	JOGGING TRACK	YOGA & MEDITATION
SIT OUTS WITH AROMA GARDEN	GAZEBO	SOCIETY OFFICE	DROP OFF ZONE	SENIOR CITIZEN PARK
24X7 SECURITY	ELEGANT SPACIOUS FOYER	ENTRANCE GATE	CCTV CAMERA	THREE LAYER PARKING

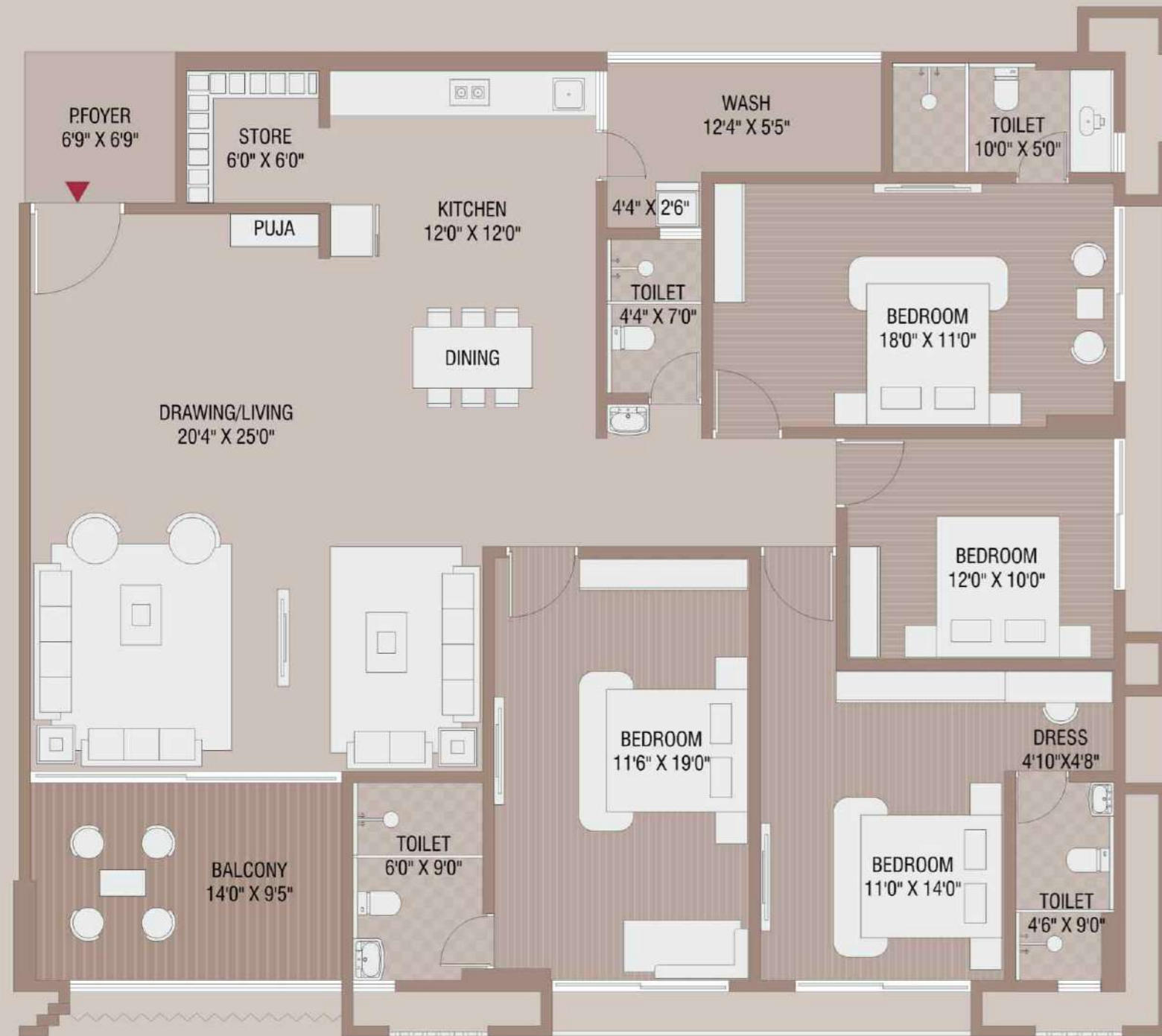




12.00 MT. WIDE ROAD

## TYPICAL FLOOR LAYOUT PLAN



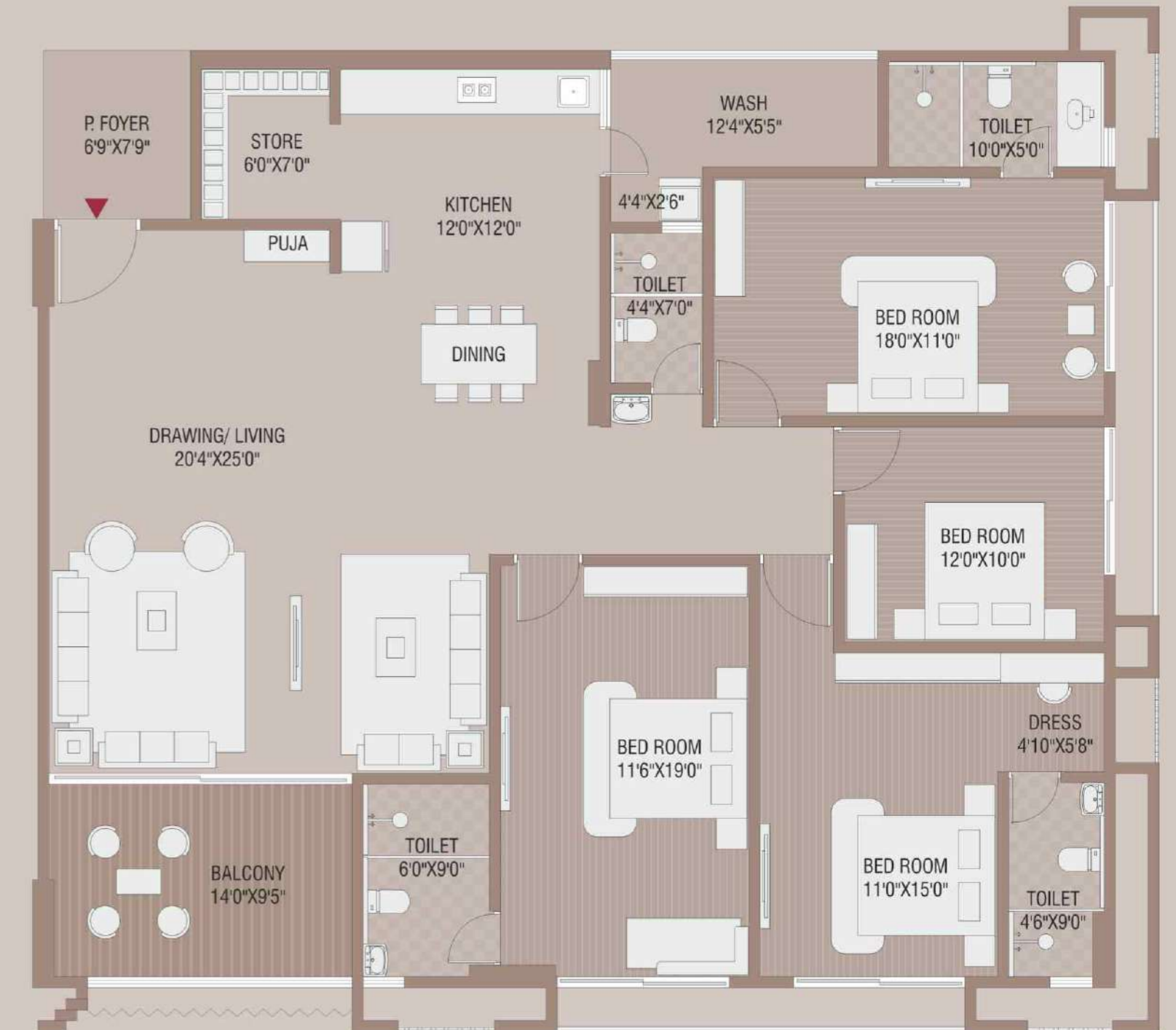


**BLOCK - A**  
**UNIT - 103 & 104**

**BLOCK - A & B**

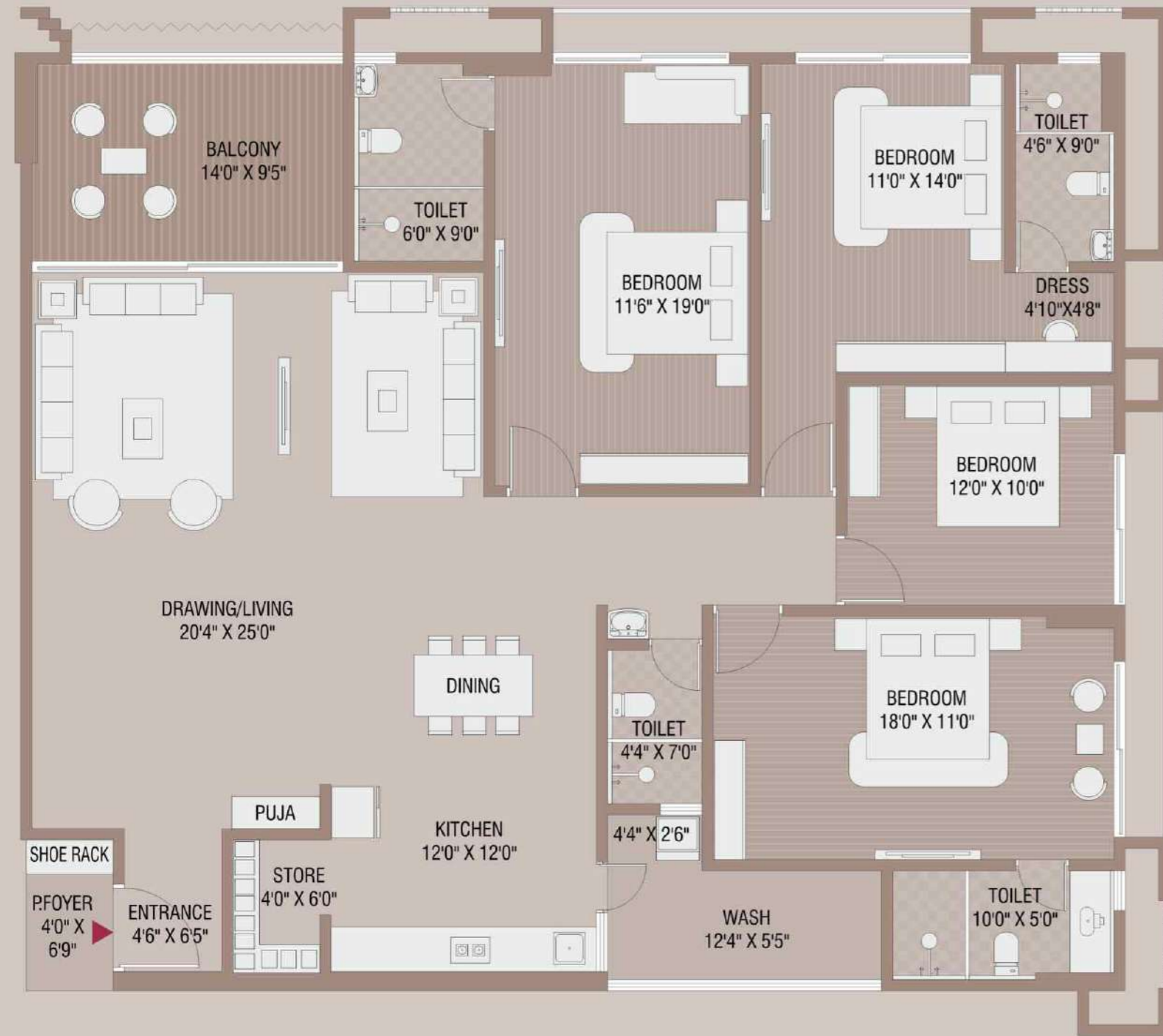


**4** BHK UNIT PLAN



**BLOCK - B**  
**UNIT - 101 & 102**

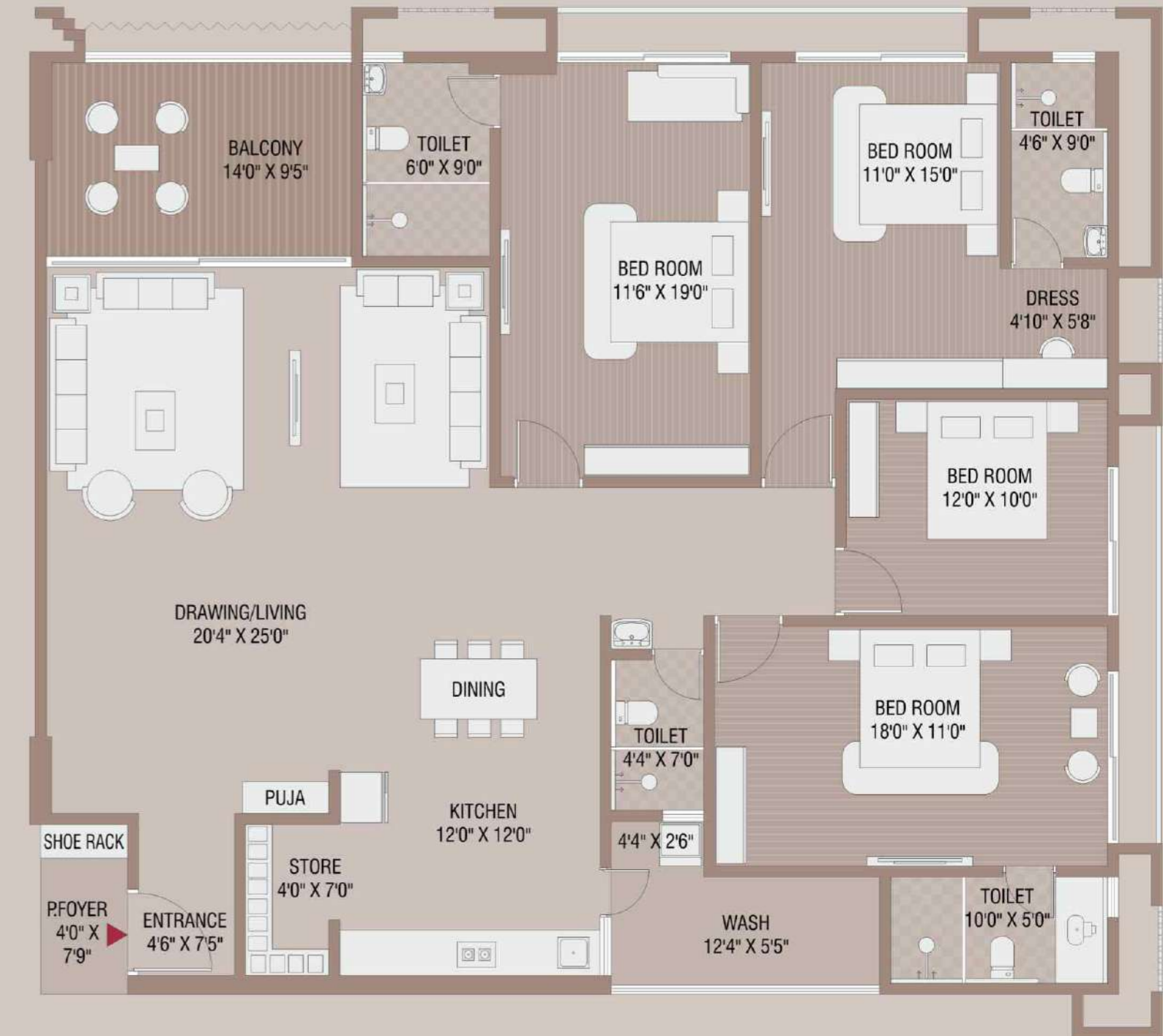




**BLOCK - A**  
**UNIT - 101 & 102**



**4** BHK UNIT PLAN



**BLOCK - B**  
**UNIT - 103 & 104**

**BLOCK - C & D**

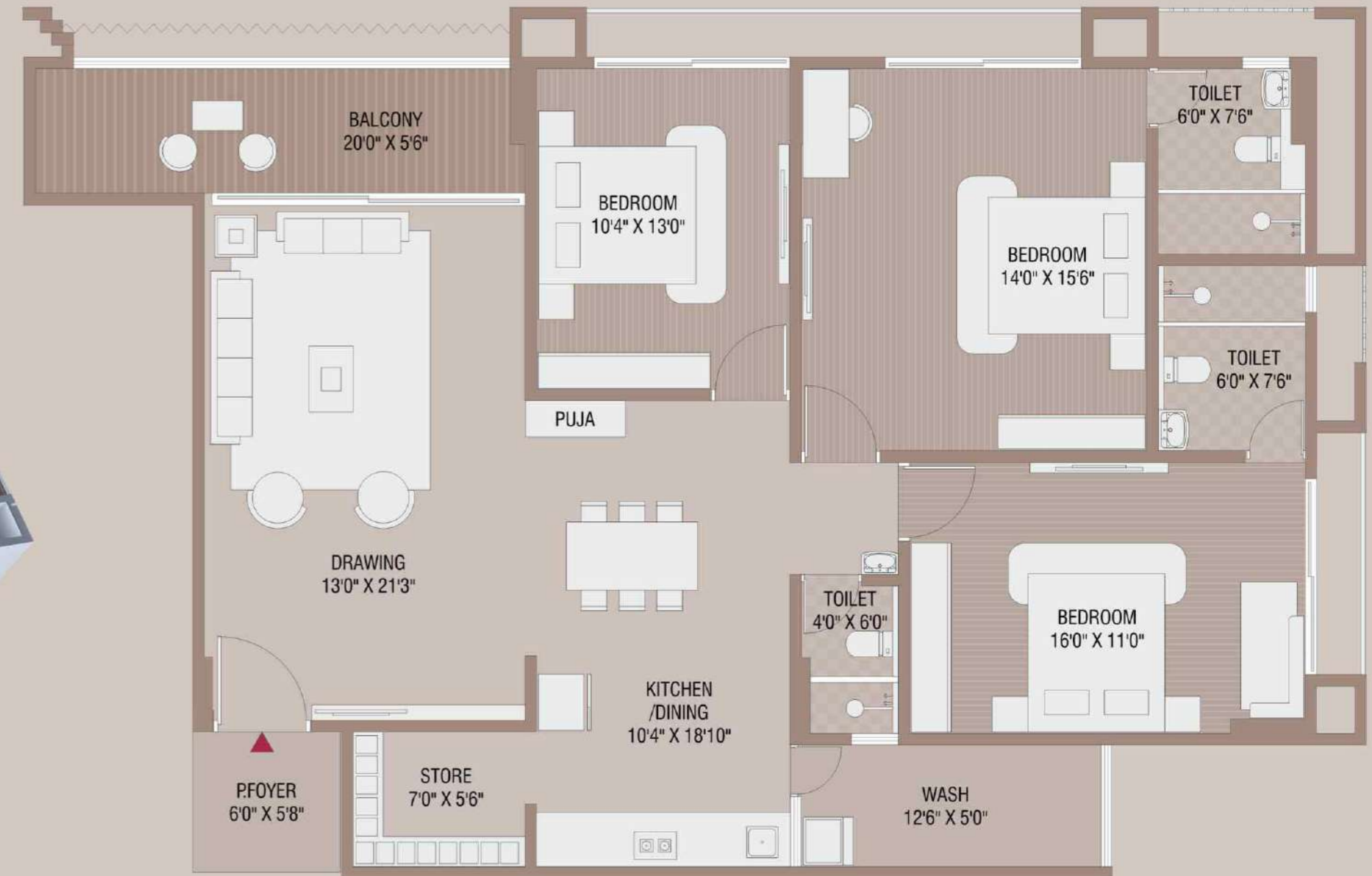
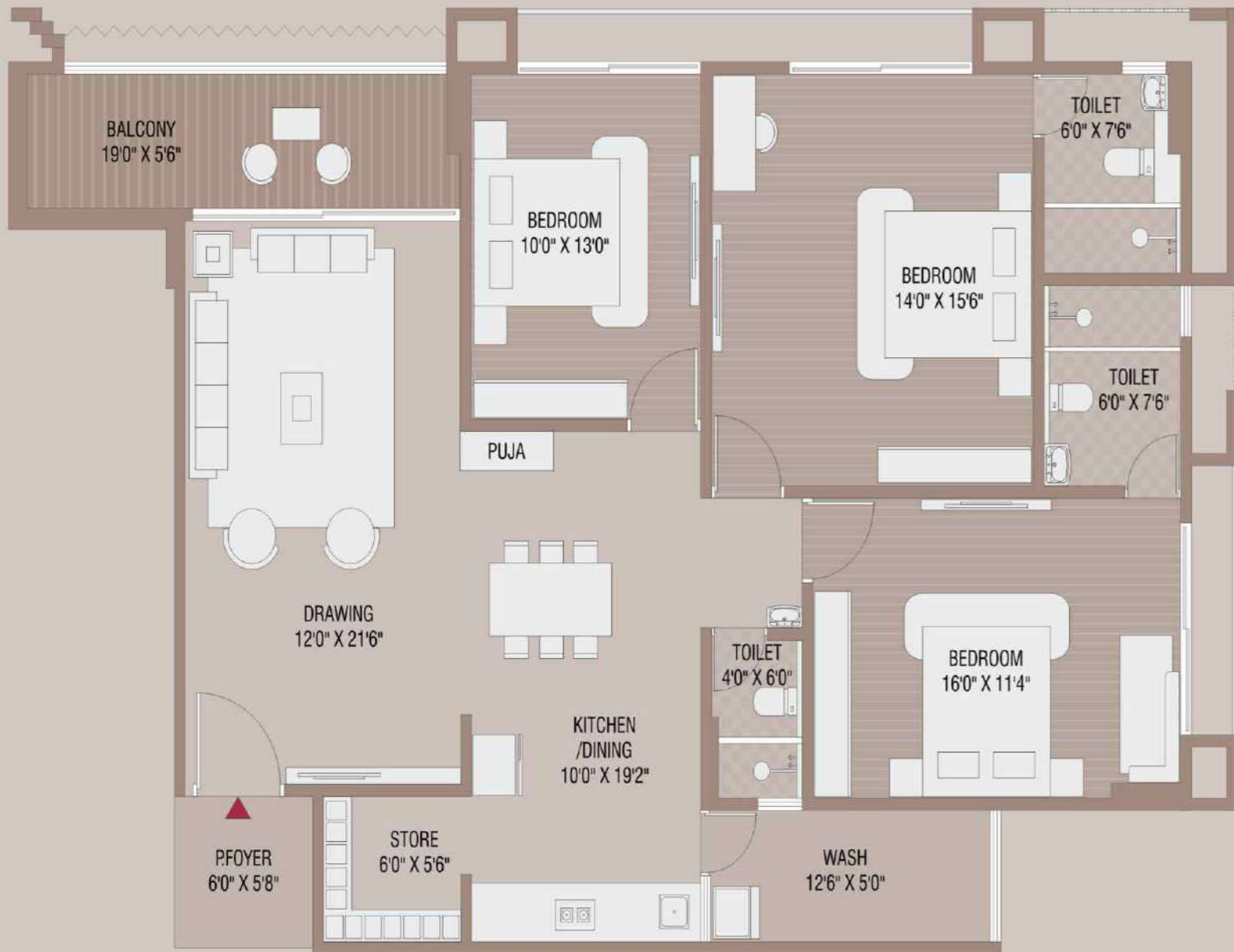


**BLOCK - C**  
**UNIT - 101 & 104**

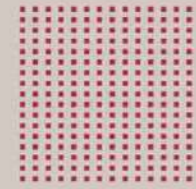
**3** BHK UNIT PLAN

**BLOCK - D**  
**UNIT - 101 & 104**

BLOCK - C & D



3 BHK UNIT PLAN



## SPECIFICATION



### WALL FINISH

- Internal smooth finish mala plaster
- External : double coat sand faced plaster or texture finish



### FLOORING

- Vitrified tiles flooring in entire flat.



### KITCHEN

- Standing polished natural granite kitchen.
- Platform with sing & glazed tiles dado above the platform up to lintel level.



### DOORS

- Wooden frame with decorative main door and flush door with granite frame inside.



### WINDOWS

- All windows with fully glazed shutter with aluminum section.



### BATHROOM AND PLUMBING

- Glazed tiles dado up to lintel level in all bathrooms.
- Concealed plumbing with good quality fittings.



### ELECTRIFICATION

- Concealed ISI copper wiring with standard accessories.



### PAINT

- Exterior painting of acrylic paint.
- Internal wall double coat putty finish.



### LIFTS

- Fine quality fully automatic lifts.



### TERRACE

- China mosaic flooring with water proofing.

# Gulmohar

*The Garden Living*

Opp. Kesar Vatika, Nr. Mango Plus Cinema,  
Bhakti Circle Road, Nikol.

SCAN FOR LOCATION



Interior Design



Landscape Design



Structural Design



Architect Design

